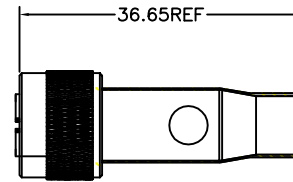
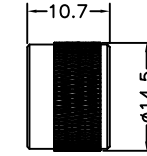
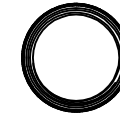
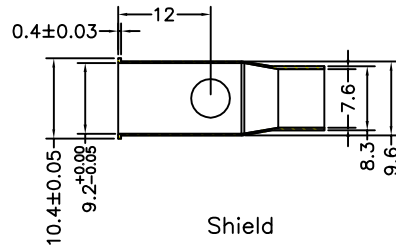
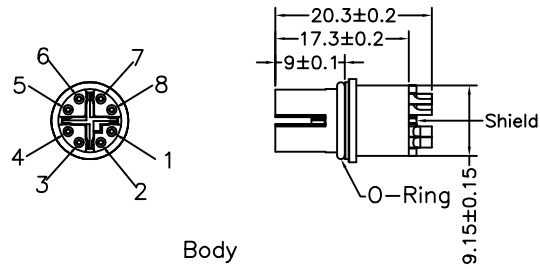


| REVISIONS |                 |          |            |
|-----------|-----------------|----------|------------|
| REV.      | DESCRIPTION     | DATE     | REVISED BY |
| S0        | CREATED DRAWING | 06/12/17 | Ruby_zhang |



Electrical Character  
 Rating voltage: 60V AC/DC  
 Insulation resistance: >100MΩ  
 Rating current: 0.5A  
 Contact resistance: ≤5mΩ

General Information  
 Standard: IEC 61076-2-109  
 Contacts: Phosphorus copper with gold plated  
 Connector Locking System: Screw-locking  
 Waterproof Rating: IP67  
 ALL MATERIALS ARE COMPLIANT WITH ROHS OR REACH

|   |  |  |  |   |               |
|---|--|--|--|---|---------------|
|   |  | TITLE: M12 X Coding 8Pin female solder connector with shield |  |   |               |
|   |  | Customer Part No: --   |  | REV. --                                   | UNITS: mm     |
| DRAWN BY: Ruby_zhang  |  | DATE: 06/12/17   |  | Indus-connector Part No: 12C038           |               |
| CHECKED BY: David   |  | DATE: 06/12/17   |  | REV. S0                                   | SCALE: NONE   |
| APPROVED BY: --   |  | DATE: --   |  | Tolerances Unless Otherwise Specified:    |               |
| THIS DRAWING CONTAINS INFORMATION THAT IS PROPRIETARY TO INDUS-CONNECTOR INCORPORATED |  | DECIMALES: X. ±0.30 .X ±0.20                                 |  | ANGLS: X°. ±2.0° .X° ±1.0°<br>PROJECTION: |               |
|   |  |  |  | SIZE: A4                                  | SHEET: 1 OF 1 |