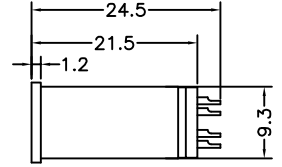
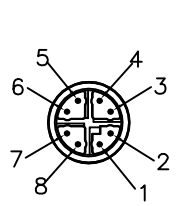
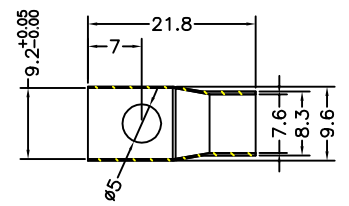


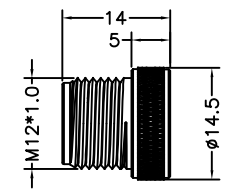
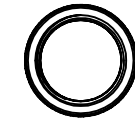
REVISIONS			
REV.	DESCRIPTION	DATE	REVISED BY
S0	CREATED DRAWING	04/19/17	Ruby_zhang



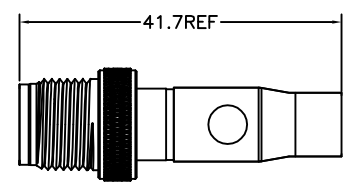
Body



Shield



Screw



Electrical Character:
 Rating voltage: 60V AC/DC
 Insulation resistance: >100MΩ
 Rating current: 0.5A
 Contact resistance: ≤5mΩ

General Information:
 Standard: IEC 61076-2-109
 Contacts: Brass with gold plated
 Connector Locking System: Screw-locking
 Waterproof Rating: IP67
 ALL MATERIALS ARE COMPLIANT WITH ROHS OR REACH

		TITLE: M12 X Coding 8Pin male solder connector with shield			
		Customer Part No: --		REV. --	UNITS: mm
DRAWN BY: Ruby_zhang	DATE: 04/19/17	Indus-connector Part No: 12C037		REV. S0	SCALE: NONE
CHECKED BY: David	DATE: 04/19/17	Tolerances Unless Otherwise Specified: DECIMALES: X. ±0.30 .X ±0.20 ANGLES: X°. ±2.0° .X° ±1.0°		PROJECTION:	
APPROVED BY: --	DATE: --	THIS DRAWING CONTAINS INFORMATION THAT IS PROPRIETARY TO INDUS-CONNECTOR INCORPORATED		SIZE: A4 SHEET: 1 OF 1	